

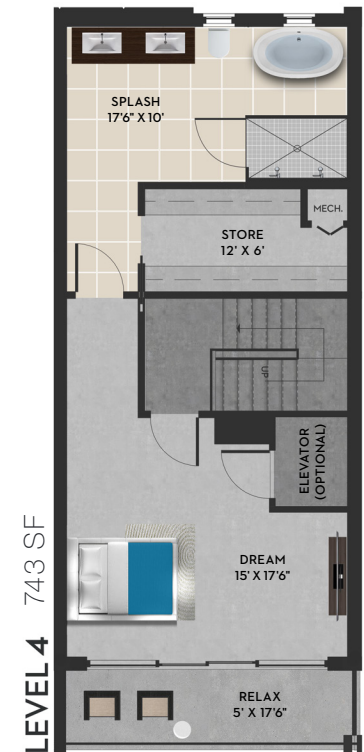
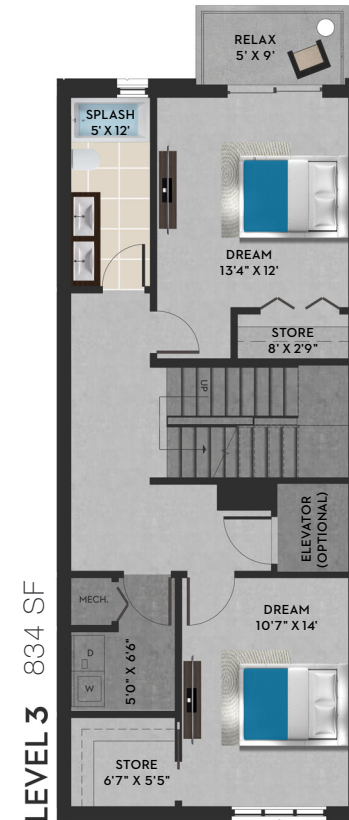
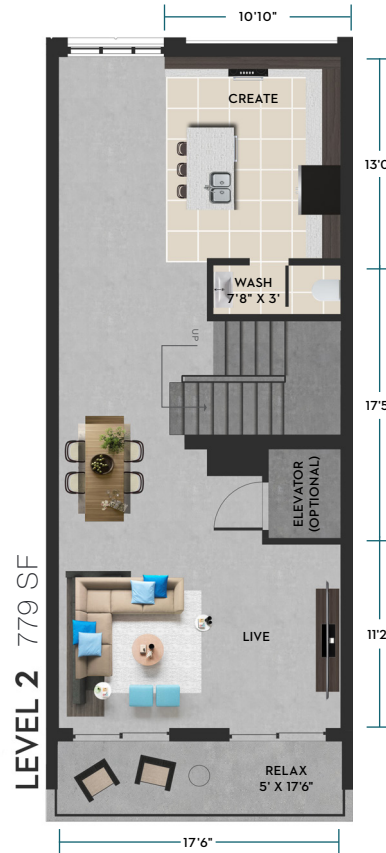
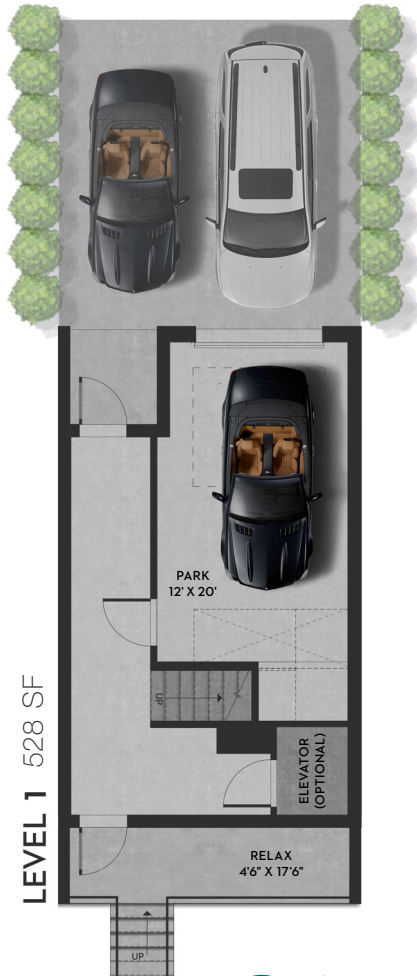
# KAEL

## 4 STORY VILLAS

**3 BED 2.5 BATH**

AC AREA 2644 S.F.  
 GARAGE 240 S.F.  
 TERRACE 375 S.F.  
**TOTAL 3259 S.F.**

**koi™**  
 RESIDENCES & MARINA  
 POMPANO BEACH FLORIDA



INVESCA

koipompanobeach.com

Last Modified: 07-26-2016

Stated dimensions are measured to the exterior boundaries of the exterior walls and the centerline of interior demising walls, and, in fact, vary from the dimensions that would be determined by using the description and definition of the "Unit" set forth in the Declaration (which generally only includes the interior airspace between the perimeter walls and excludes interior structural components). For your reference, the area of the Unit, determined in accordance with those defined unit boundaries, is + or - the sq. ft. for both three- and four-story villa units. Note that measurements of rooms set forth on this floor plan are generally taken at the greatest points of each given room (as if the room were a perfect rectangle), without regard for any cutouts. Accordingly, the area of the actual room will typically be smaller than the product obtained by multiplying the stated length and width. All dimensions are approximate and may vary with actual construction, and all floor plans and development plans are subject to change. Copyright 2015. Invesca Development Group. All rights reserved.

Exclusive Sales  
 Representing by  
**IGR**

# K A E L

## RESIDÊNCIAS DE 4 PAVIMENTOS

### 3 QUARTOS 2.5 BANHEIROS

ÁREA AC 246 m<sup>2</sup>  
GARAGEM 22 m<sup>2</sup>  
VARANDA 35 m<sup>2</sup>  
TOTAL 303 m<sup>2</sup>

**koi™**  
RESIDENCES & MARINA  
POMPAÑO BEACH FLORIDA



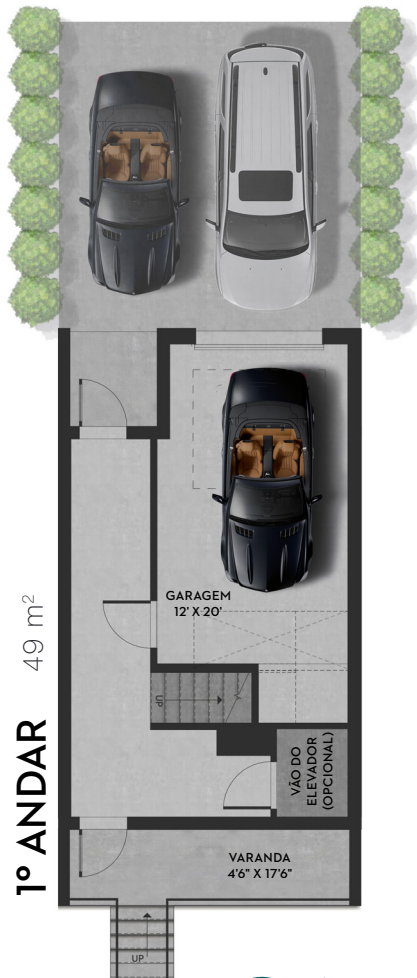
VISTA DE FRENTE



VISTA DE TRÁS



VISTA DO PARQUE



VISTA PARA ÁGUA



VISTA DO PARQUE



VISTA PARA ÁGUA



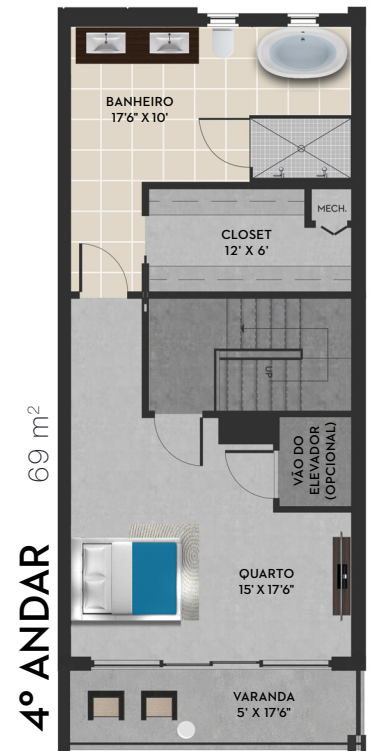
VISTA DO PARQUE



VISTA PARA ÁGUA



VISTA DO PARQUE



VISTA PARA ÁGUA

INVESCA

koipompanobeach.com

Última Modificação: 07-26-2016

Stated dimensions are measured to the exterior boundaries of the exterior walls and the centerline of interior demising walls, and, in fact, vary from the dimensions that would be determined by using the description and definition of the "Unit" set forth in the Declaration (which generally only includes the interior airspace between the perimeter walls and excludes interior structural components). For your reference, the area of the Unit, determined in accordance with those defined unit boundaries, is + or - the sq. ft. for both three- and four-story villa units. Note that measurements of rooms set forth on this floor plan are generally taken at the greatest points of each given room (as if the room were a perfect rectangle), without regard for any cutouts. Accordingly, the area of the actual room will typically be smaller than the product obtained by multiplying the stated length and width. All dimensions are approximate and may vary with actual construction, and all floor plans and development plans are subject to change. Copyright 2015. Invesca Development Group. All rights reserved.

Exclusive Sales  
Representing by  
**IGR**